



41120 SAN FRANCISCO

PALLISER®

Dimensions shown as Width x Depth x Height. Specifications are correct at time of printing and are subject to change without notice.
LHF - left hand facing **RHF** - right hand facing **IA** - inside arm to inside arm.



04-Home Theater Ottoman
 44 x 28 x 19"
 112 x 71 x 48cm



09-Corner Curve
 48 x 48 x 39"
 122 x 122 x 100cm



10-Armless Chair
 24 x 40 x 39"
 61 x 101 x 100cm



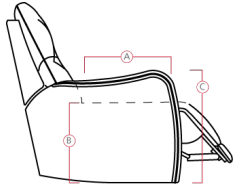
30-Armless Recliner
60-Armless Recliner Pwr
 24 x 40 x 39"
 61 x 101 x 100cm



32-Rocker Recliner Chair
31-Wallhugger Recliner Chair Pwr
33-Swivel Rocker Recliner Chair
35-Wallhugger Recliner Chair



46-RHF Recliner Chair
47-LHF Recliner Chair
66-RHF Recliner Pwr
67-LHF Recliner Pwr
 33 x 40 x 39"
 84 x 101 x 100cm

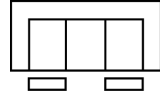


Dimensions

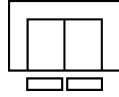
- A - Seat Depth - 21" / 53cm
- B - Seat Height - 19" / 48cm
- C - Arm Height - 26" / 66cm

Features

- Hardwood, softwood and engineered wood products; all joints pinned & glued for uniformity & strength
- Back: Premium elastic webbing offers consistent suspension for the life of the product
- Seat: 8 gauge sinuous wire springs for superior ride and comfort
- High resilience seat foam for superior durability and comfort
- Chaise styling for ultimate comfort and support in full recline
- Toggle power mechanism
- Touch button for power operation



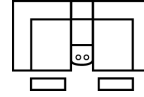
51-Sofa Recliner
61-Sofa Recliner Pwr
 87 x 40 x 39"
 220 x 102 x 100cm
 IA: 70" / 177cm



53-Loveseat Recliner
63-Loveseat Recliner Pwr
 66 x 40 x 39"
 169 x 101 x 100cm
 IA: 46" / 117cm



56-RHF Chaise
57-LHF Chaise
 28 x 67 x 39"
 72 x 169 x 100cm



58-Loveseat Console
68-Loveseat Console Pwr
 77 x 40 x 39"
 196 x 101 x 100cm



W0-Home Theater Wedge
 17 x 40 x 35"
 42 x 102 x 89cm



W1-45 Degree Wedge
 37 x 38 x 35"
 93 x 97 x 89cm



W2-Console
 13 x 40 x 35"
 33 x 102 x 89cm

Options

- Stainless Steel Cupholder
- Antique Cupholder
- LED cupholder



41120 SAN FRANCISCO

PALLISER®

Popular Configurations

Note: Always assemble configurations from right hand facing to left hand facing components.

How We Measure

Height - measured from the highest point of the back pillow to the floor.

Depth - measured from the front edge of the seat cushion to the top of the back.

Width - measured from the widest point of the arm or arm pillow to the widest point of the opposite arm or arm pillow.

Arm Height - measured from the top of the arm to the floor.

Seat Height - measured from the crown of the seat cushion to the floor.

Warranty

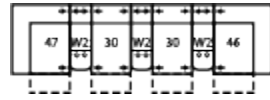
Wood Frames, Springs or Webbing - ten year warranty

Metal Frames - two year warranty under normal household use

Motion Reclining Mechanisms - seven year warranty

Reclining Chairs, Sofabed Mechanisms and Sofabed Mattresses - two year warranty

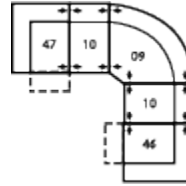
Seat Cushion Foam and Fibre-filled Components - five year pro-rated warranty



CONFIGURATION M1

152 x 66"

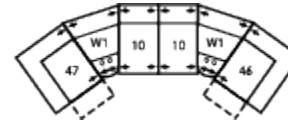
386 x 168cm



CONFIGURATION MA

109 x 109"

277 x 277cm



CONFIGURATION MW

170 x 75"

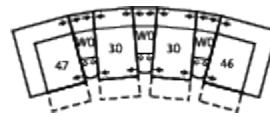
432 x 191cm



CONFIGURATION MX

124 x 70"

315 x 178cm



CONFIGURATION MY

163 x 74"

414 x 188cm



CONFIGURATION MZ

116 x 66"

295 x 168cm